

# Unit 3 Summary

## Minimizing Human Impacts



Fossil Fuels are not getting any cheaper..



**Fossil Fuels = Nonrenewable  
= get depleted**



Renewable fuels = Replaced by natural processes =  
more sustainable



Ways to live more sustainably

Use renewable fuels

# Ex: Solar







# Hydropower



# Wind

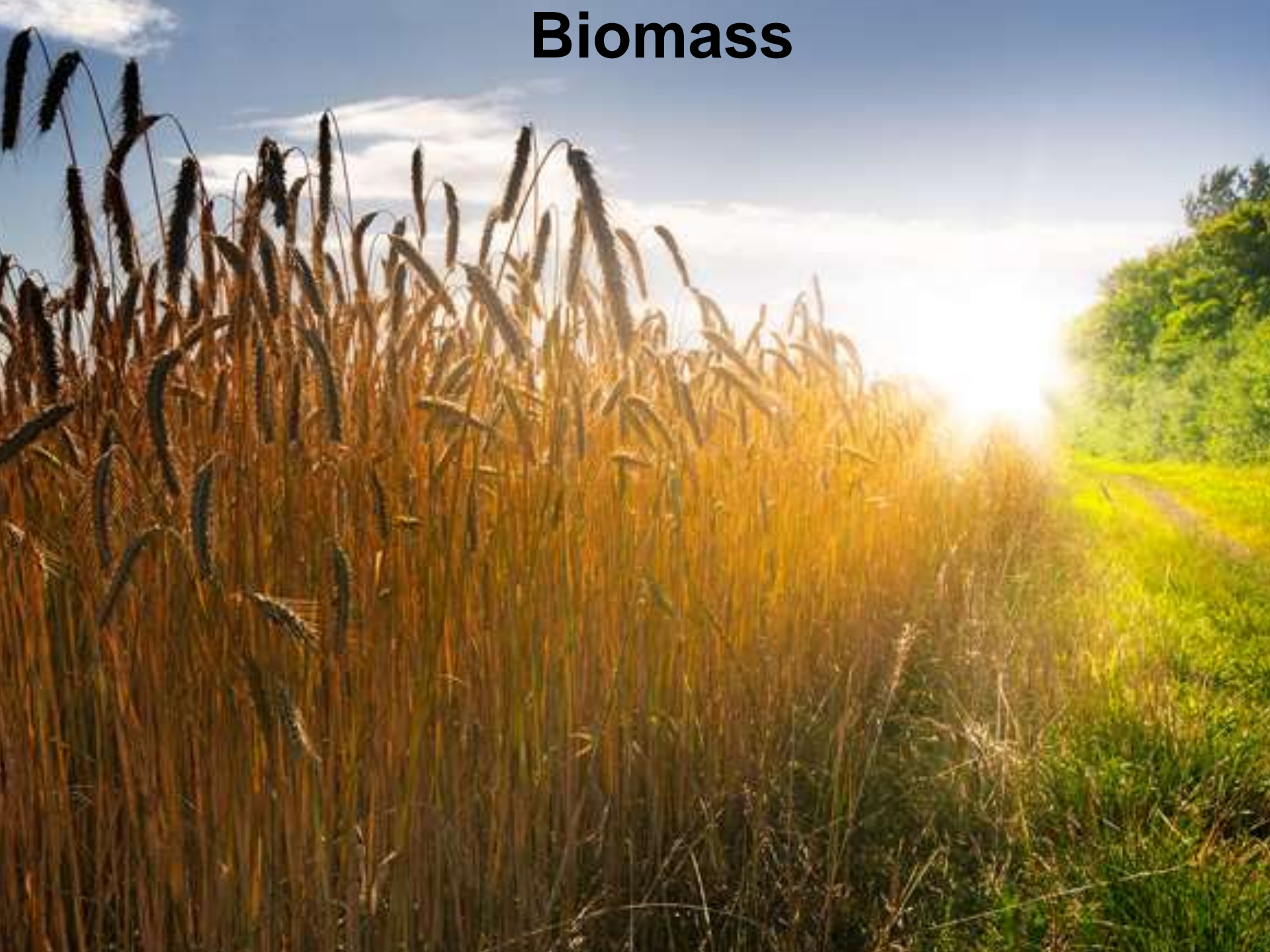


# Geothermal energy

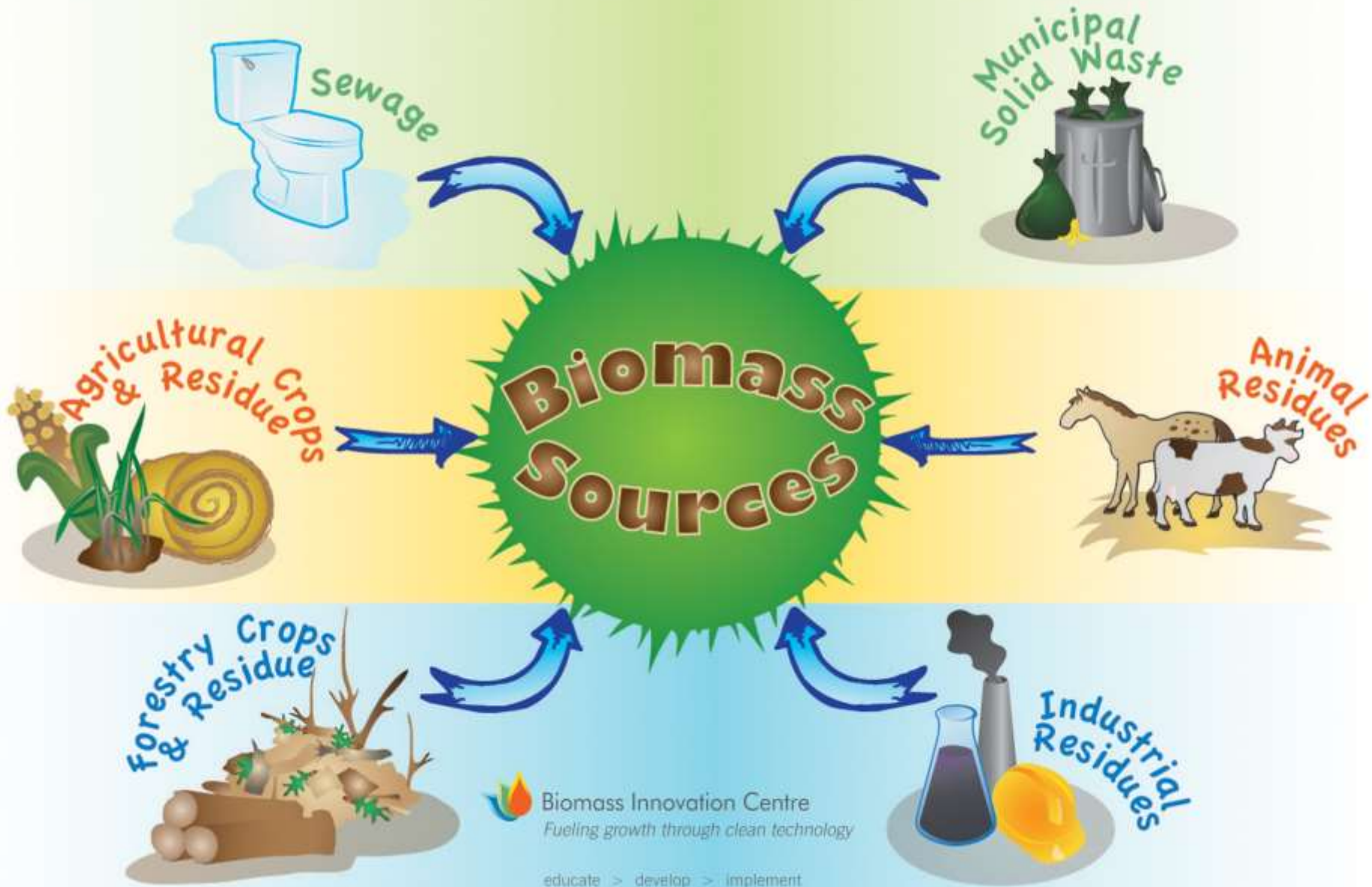




# Biomass



# Biomass → Biofuels





Reed

Hybrid Willow



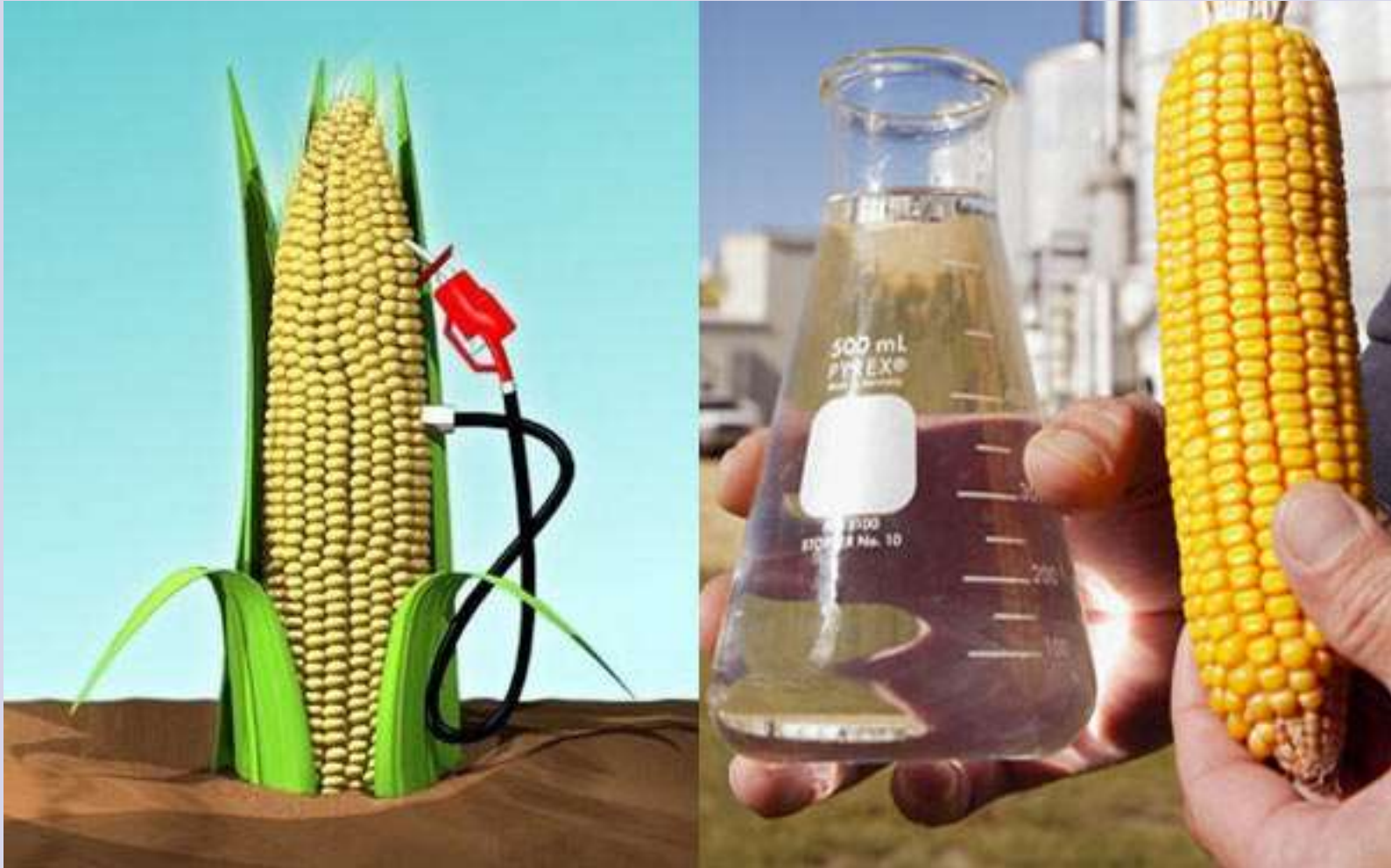
Corn Stalks



Wheat Straw



# Biomass → Ethanol





# Microalgae → biodiesel



Recycling = converting used products into new products

# Ex:

BEFORE...

AFTER!

**Show What You're Made Of.**  
SUPPORT RECYCLING

casella  
waste systems, inc.

www.casella.com

802 775-0325

The advertisement is split into two vertical panels. The left panel has an orange background and features a clear plastic water bottle with a blue cap. The right panel has a blue background and features an orange t-shirt. A white banner with black text is positioned diagonally across the bottom of the panels. The Casella logo and contact information are located in the bottom right corner.

# Ex:



**Metal Cans**

=



**Bike Parts**



**Car Parts**



**Steel Beams**



**Rebar**



**Appliances**



**New Cans**

# ZERO-SORT

## HOW RECYCLING GETS DONE



### CARDBOARD

Grey, Brown, White, Colored



### PAPER

Newspapers, Mail, Envelopes, Catalogs, Magazines, File Folders, Office Paper (Any Color), Used Coffee Cups, Take-Out Containers, Paper Towels, Napkins, Post-its



### PLASTIC

All Containers including Bottles, Cups, Plates, Flatware



### GLASS

Bottles and Containers (Any Color)



### METAL

Aluminum, Tin, Steel Containers, Staples, Paper Clips

### PLEASE EMPTY CONTENTS

Zero-Sort Does Not Accept:  
Styrofoam, Plastic Bags, Food Waste



Learn more about how  
Zero-Sort® Recycling  
works at [zerosort.com](http://zerosort.com)

Decrease food waste



Ex: Compost



Conservation = use less



# Recycle aluminum cans to make new cans



**CONSERVE ENERGY**

**Shut It  
OFF**

**when not in use**

Increase Energy Efficiency

Ex: insulate homes



# LED Lighting



Change the way you eat

Eat locally





Eat less meat



Prevent the spread of non-  
native species

# Plant native species



# Clean off boats

